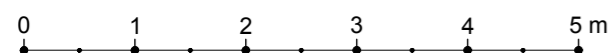
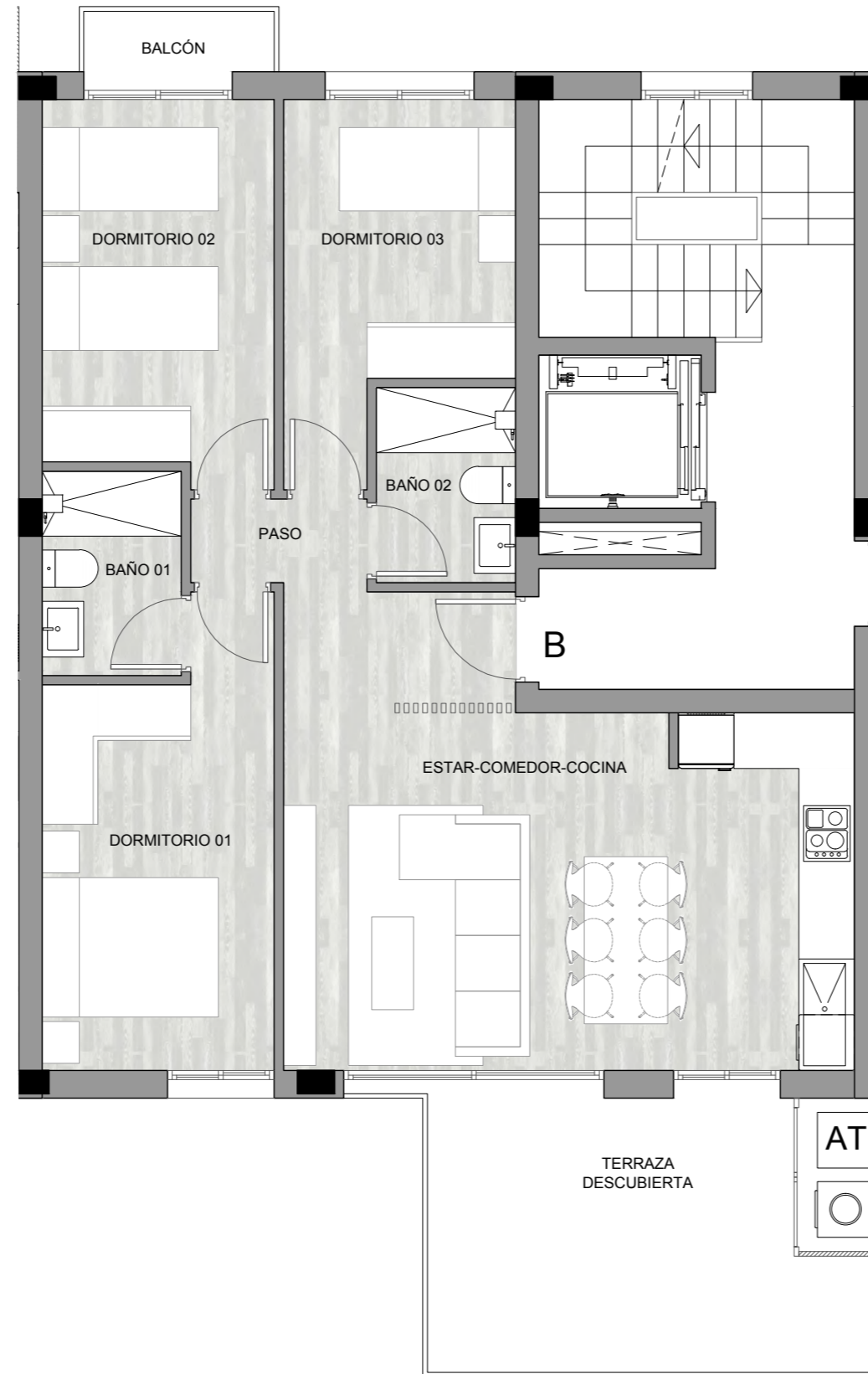


VIVIENDA Escalera 1

PLANTA: 1º B



Superficies útiles

Acceso	0.00 m ²
Paso	1.71 m ²
Estar-comedor-cocina	27.70 m ²
Dormitorio 01	11.27 m ²
Dormitorio 02	10.02 m ²
Dormitorio 03	8.58 m ²
Baño 01	3.30 m ²
Baño 02	3.15 m ²

Total superficie útil int. 65.73 m²

Terrazas	16.20 m ²
Solarium	0.00 m ²

Total superficie útil ext. 16.20 m²

Total sup. útil 81.93 m²

Superficies construidas

Sup. const. interior	74.70 m ²
Sup. const. exterior	16.20 m ²
P./P. Zonas comunes	16.14 m ²

Total sup. cons. 107.04 m²

Sup. const. comp. total 90.84 m²

