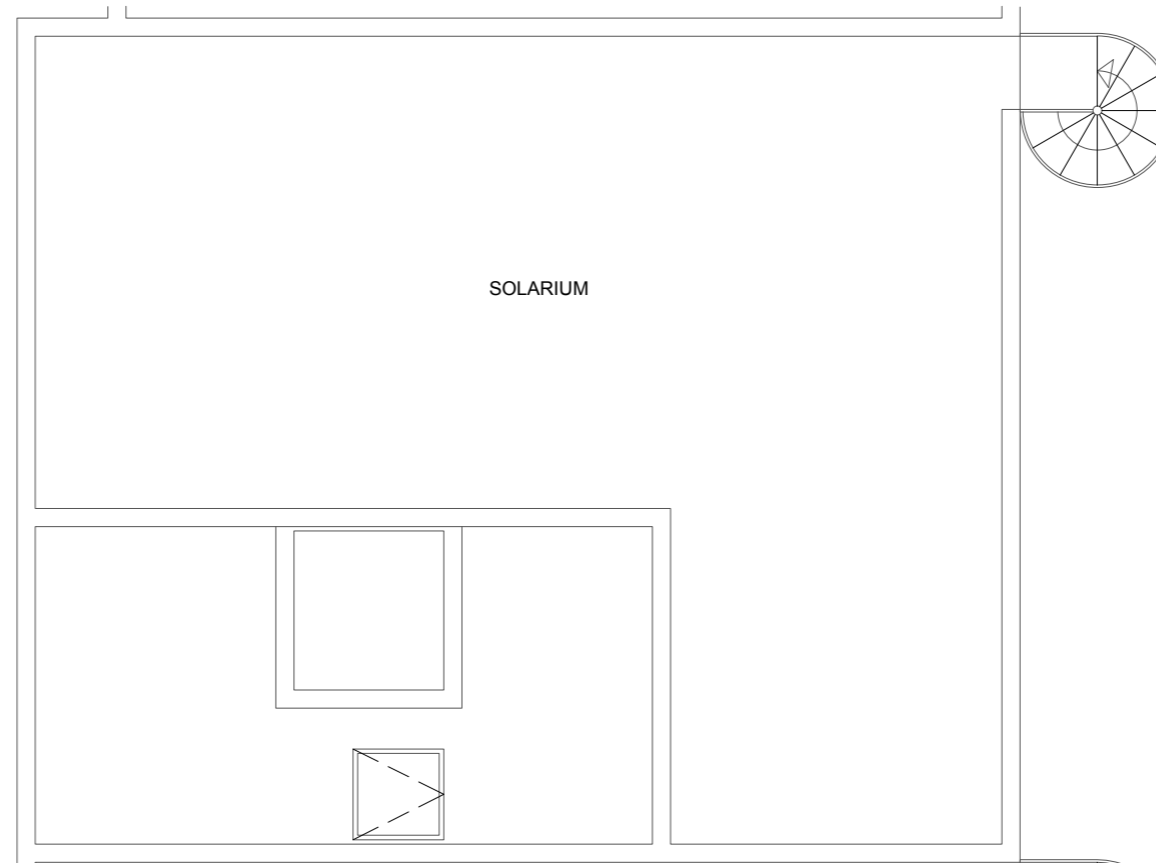
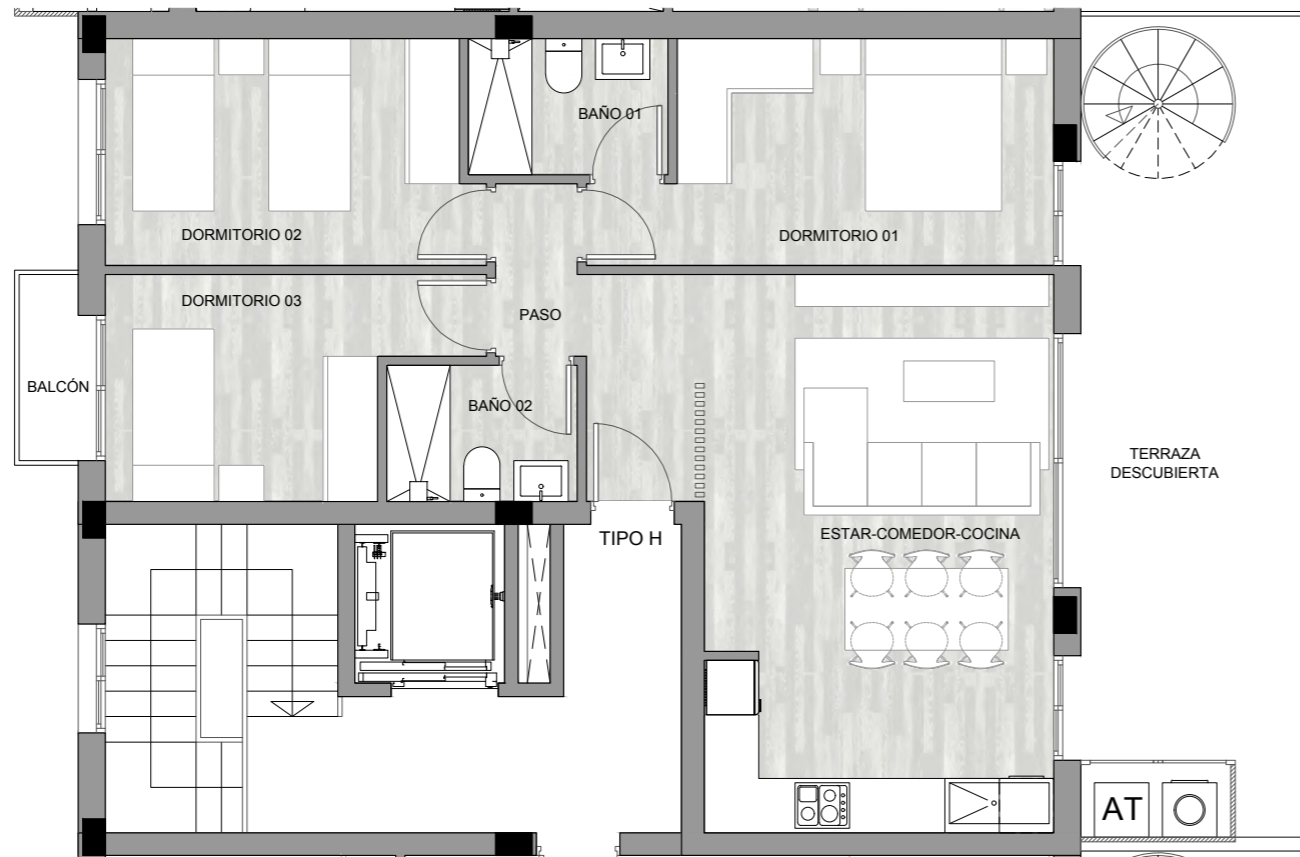


# VIVIENDA Escalera 1

## PLANTAS: Ático B



### Superficies útiles

Acceso	0.00 m <sup>2</sup>
Paso	1.71 m <sup>2</sup>
Estar-comedor-cocina	26.93 m <sup>2</sup>
Dormitorio 01	11.27 m <sup>2</sup>
Dormitorio 02	10.02 m <sup>2</sup>
Dormitorio 03	8.58 m <sup>2</sup>
Baño 01	3.30 m <sup>2</sup>
Baño 02	3.15 m <sup>2</sup>

**Total superficie útil int. 64.96 m<sup>2</sup>**

Terrazas	25.41 m <sup>2</sup>
Solarium	68.89 m <sup>2</sup>

**Total superficie útil ext. 94.30 m<sup>2</sup>**

**Total sup. útil 159.26 m<sup>2</sup>**

### Superficies construidas

Sup. const. interior	75.00 m <sup>2</sup>
Sup. const. exterior	97.65 m <sup>2</sup>
P./P. Zonas comunes	18.97 m <sup>2</sup>

**Total sup. cons. 191.62 m<sup>2</sup>**

Sup. const. comp. total 93.97 m<sup>2</sup>

