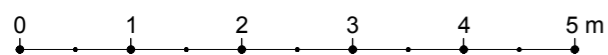
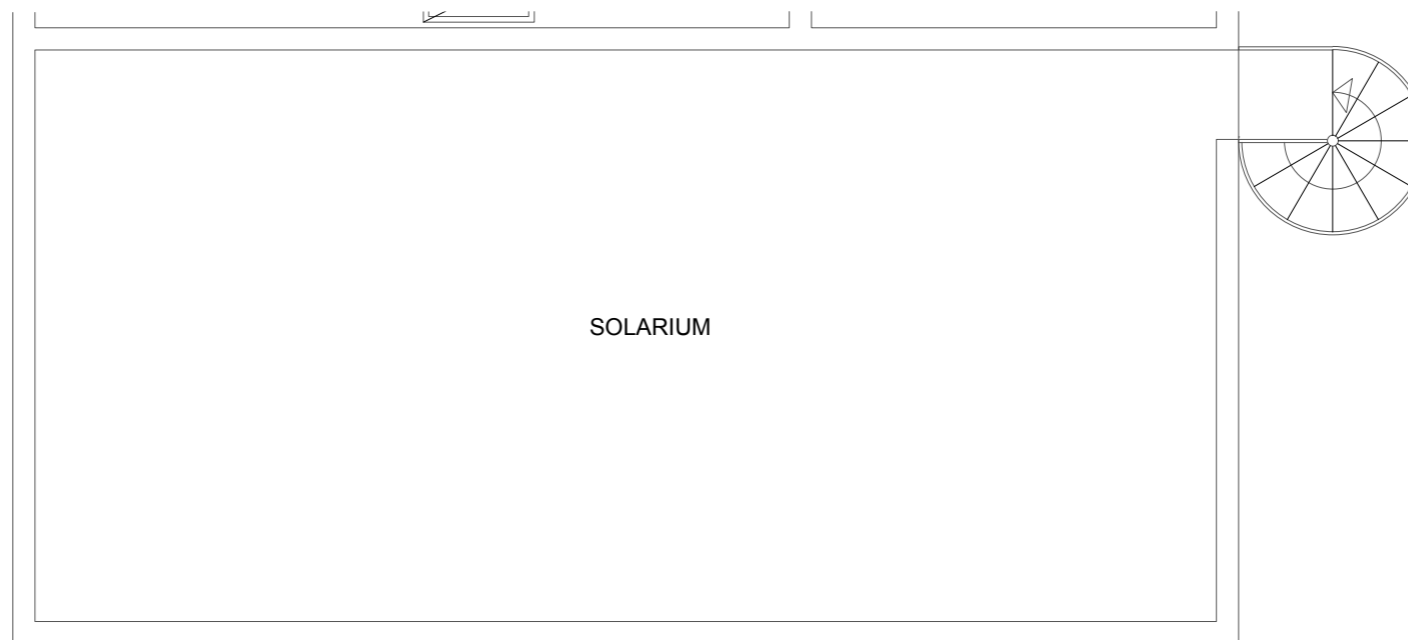


VIVIENDA Escalera 1

PLANTAS: Ático A



Superficies útiles

| | |
|----------------------|----------------------|
| Acceso | 4.41 m ² |
| Paso | 0.00 m ² |
| Estar-comedor-cocina | 22.69 m ² |
| Dormitorio 01 | 10.50 m ² |
| Dormitorio 02 | 8.00 m ² |
| Dormitorio 03 | 0.00 m ² |
| Baño 01 | 3.36 m ² |
| Baño 02 | 2.56 m ² |

Total superficie útil int. 51.52 m²

| | |
|----------|----------------------|
| Terrazas | 16.94 m ² |
| Solarium | 54.85 m ² |

Total superficie útil ext. 71.79 m²

Total sup. útil 123.31 m²

Superficies construidas

| | |
|----------------------|----------------------|
| Sup. const. interior | 60.50 m ² |
| Sup. const. exterior | 76.90 m ² |
| P./P. Zonas comunes | 15.30 m ² |

Total sup. cons. 152.70 m²

Sup. const. comp. total 75.80 m²

